

464.

(MED. WALTZ)

WILD FLOWER

- WAYNE SHORTER

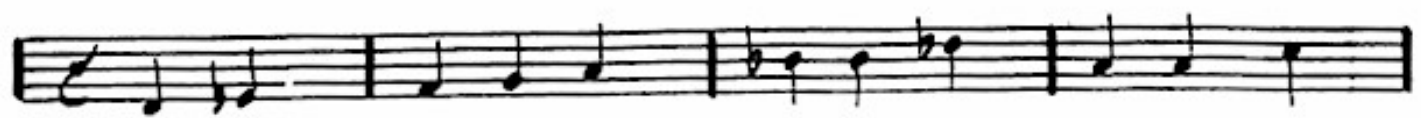
Handwritten musical score for "Wild Flower" by Wayne Shorter. The score is in 3/4 time and consists of 12 staves. The first staff is the melody in G-flat major, with chords Bb major 7, Ab-7, and A7 (b9). The second staff is the bass line with chords D-7, Ab-7, and A7 (b9). The third staff is the melody in G-flat major, with chords Bb major 7, Ab-7, and A7 (b9). The fourth staff is the bass line with chords D-7, Ab-7, and A7 (b9). The fifth staff is the melody in G major, with chords G-7, C-7, and F7. The sixth staff is the bass line with chords Bb major 7, Eb major 7, and F. The seventh staff is the melody in G major, with chords G-7, C7 (b9), and F. The eighth staff is the bass line with chords F-7, E7 (#9), and F. The ninth staff is the bass line with chords F-7, E7 (#9), and F.

Ebmaj7

>

Ab-7

A7 (b9)



D-7

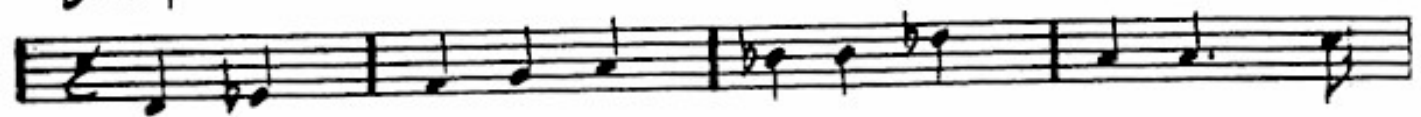


Bbmaj7

>

Ab-7

A7 (b9)

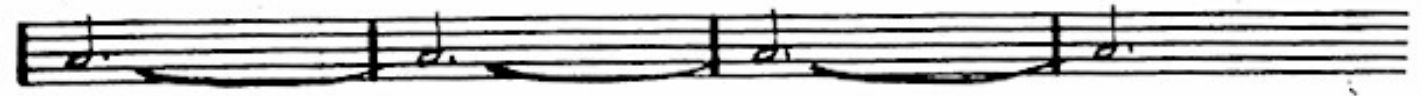


D-7

>

>

>

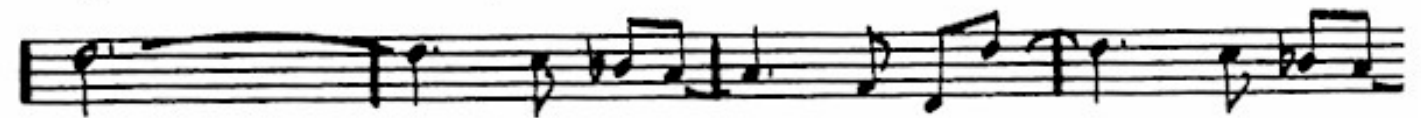


G-7

>

C-7

F7



Bbmaj7

Eb7

>

>



Abmaj7 (#11)

>

A7 (b9)

Eb7



D-7

>

>

>

